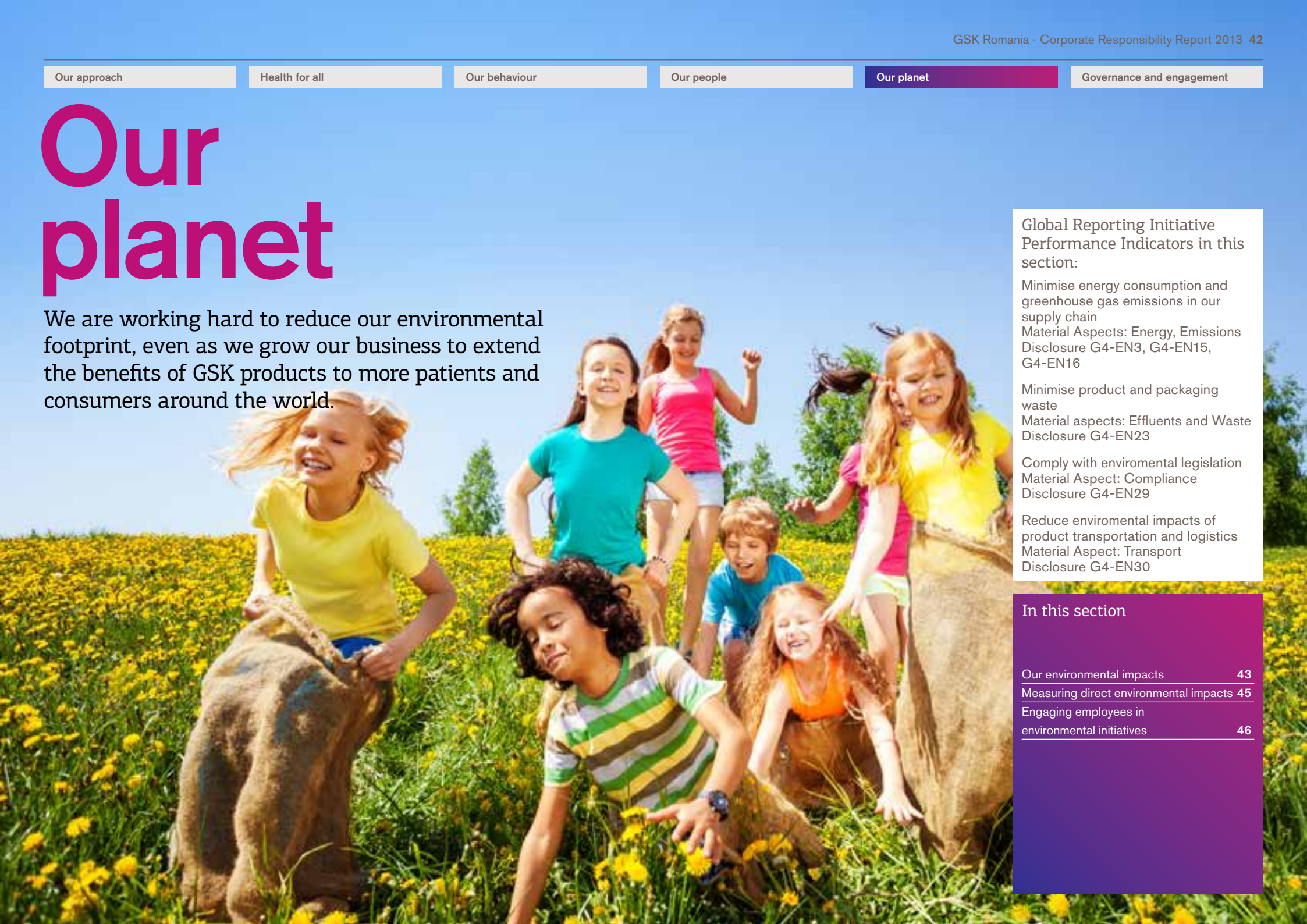


# Our planet

We are working hard to reduce our environmental footprint, even as we grow our business to extend the benefits of GSK products to more patients and consumers around the world.



Global Reporting Initiative Performance Indicators in this section:

- Minimise energy consumption and greenhouse gas emissions in our supply chain  
Material Aspects: Energy, Emissions  
Disclosure G4-EN3, G4-EN15, G4-EN16
- Minimise product and packaging waste  
Material aspects: Effluents and Waste  
Disclosure G4-EN23
- Comply with environmental legislation  
Material Aspect: Compliance  
Disclosure G4-EN29
- Reduce environmental impacts of product transportation and logistics  
Material Aspect: Transport  
Disclosure G4-EN30

In this section	
Our environmental impacts	43
Measuring direct environmental impacts	45
Engaging employees in environmental initiatives	46

# Our environmental impacts

By reducing our footprint, using resources more efficiently, and working with others to tackle these challenges, we can reduce costs, build competitiveness and create trust in our business, while contributing to the sustainability of our planet for current and future generations.

Climate change, water scarcity, resource consumption, and pollution caused by waste, including medical waste, are issues which affect our health as individuals and as communities, and influence healthcare needs and priorities. We consider the environment in our decision-making processes and aim to minimise our impacts where possible. We comply with environmental legislation in Romania and confirm there have been no environmental compliance violations in our business for the past year, and also recent years. Environmental officers in each of our business divisions maintain awareness, education and monitoring of our environmental performance.

Overall, the direct environmental impacts of our operations are modest compared to the potential for reducing impacts through the use of our products in the market. Respiratory inhalers, for example, are a significant cause of carbon emissions, and in 2013, we undertook a first-ever initiative in the Romanian market to engage customers in making inhaler usage more environmentally friendly.

**Engaging patients to reduce emissions**  
In 2013, we launched the first programme of its kind in Romania in the pharmaceutical industry – the collection of used oral respiratory inhalers from the market and their environmentally safe disposal. We aim to provide a convenient way for patients to recycle their inhalers, to help reduce waste and greenhouse gas emissions, and move towards a more environmentally sustainable approach to treating respiratory disease.

Since the start of the pilot programme in Romania, we have collected and safely disposed of more than 6,900 used inhalers in Bucharest, reducing the greenhouse gas emission impact of these inhalers by almost 100 tons of CO2e. Following this successful pilot, we are considering expanding the programme at a national level.

Called “Complete the Cycle”, our programme for inhaler collection and disposal is part of a GSK initiative. Globally, GSK estimates that more than half a million tons of greenhouse gas emissions can be avoided through the safe disposal of respiratory inhalers. Always an early adopter, GSK Romania is the fourth country in the GSK network to implement “Complete the Cycle”. While in other countries, collected inhalers are recycled, with plastics separated for remanufacturing and remaining aerosol propellant captured for reuse, in Romania, current legislation does not allow recycling. Therefore, instead, we are ensuring disposal of used inhalers by controlled incineration in the short-term, while working to drive a change in national legislation to enable recycling of used inhalers in the future. Even so, controlled incineration reduces the greenhouse gas emissions of used inhalers by more than 99% versus disposal via landfill. So, until we can change legislation in Romania, “Complete the Cycle”, offers an important environmental benefit. We estimate a potential 11,000 tons of CO2e emissions can be avoided each year if every patient in Romania returns their inhalers for safe disposal.

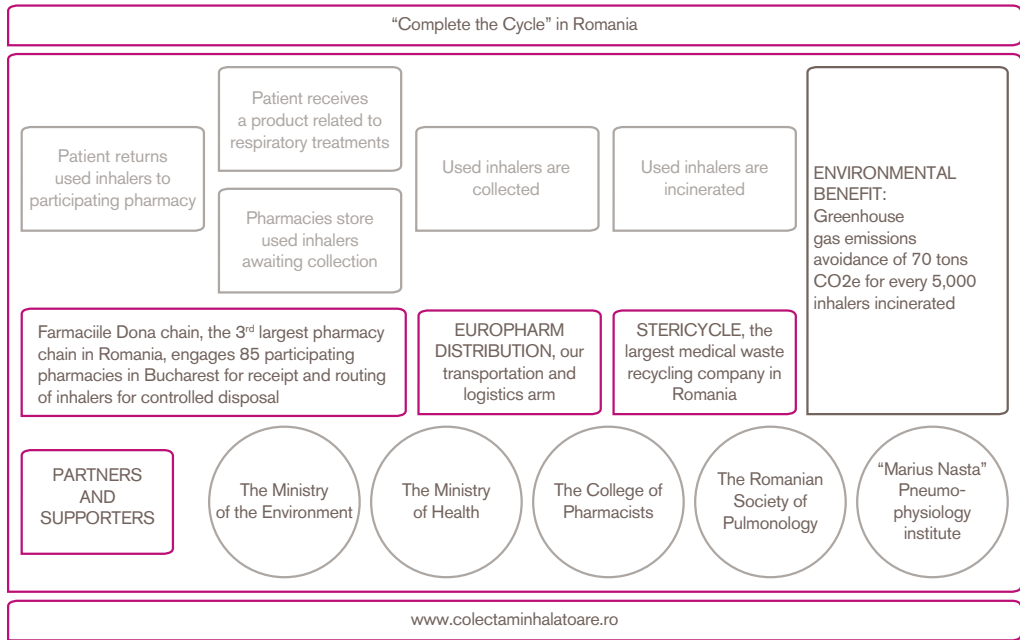
### Objectives and benefits of Complete the Cycle

There are more than 1 million asthma patients and 1 million chronic respiratory disease patients in Romania, so the potential scope of this project is to reach 2 million patients. Prior to the launch of this project, used inhalers were disposed of in general household garbage. Working with our pharmacy chain partner, Dona Pharmacies, we understood that more than 50% of the inhaler sales of all types are in Bucharest. We therefore decided on a modest pilot programme in Bucharest with

a target of 5,000 inhalers in the first six months, received through 85 participating pharmacies and collected by our recycling partner in this programme. In fact, we exceeded our target by more than 25%, recycling almost 7,000 inhalers.

Our short term objectives for Complete the Cycle are:

- Reduce waste generated by used inhalers and improve the environmental impacts of medical waste by reducing greenhouse gas emissions through controlled incineration.





# Our environmental impacts

*continued*

- Educate and inform the patients about use of inhalers – a UK project by GSK revealed that one third of inhaler propellants are not totally used when the inhaler is thrown away. Patients can improve environmental impacts and healthcare expenses by using inhalers to full capacity.
- Educate and inform the patients about responsible medical waste collection.
- Help to create a cleaner environment to protect the health of the population, which is a key factor in the prevention of respiratory diseases.

Longer term, our objective is to engage with all relevant groups including government ministries, healthcare companies, civil society and media to create a national strategy and policy for healthy and environmentally

responsible disposal of medical waste. Complete the Cycle was launched in Romania in 2013 at an event attended by senior government officials and healthcare leaders in Romania. The official inhaler campaign website was launched at this time. Please visit: [www.colectaminhalatoare.ro](http://www.colectaminhalatoare.ro)

**Recycling packaging waste**  
In 2012, in accordance with environmental law in Romania which requires importing companies to collect and recycle at least 60% of packaging waste, we commenced a system to collect and recycle post-consumer packaging recovered from our products.

In almost all categories, we exceed the minimum legal requirement for recovery and safe disposal of packaging waste. We use an accredited third party waste disposal and recycling company for this activity.

Post consumer packaging waste	Legal minimum packaging waste to be recovered	Packaging waste recovered in 2012	Packaging waste recovered in 2013
Glass	60%	86%	74%
Plastic	22.50%	47%	49%
Paper and cardboard	60%	78%	79%
Metal	50%	55%	50%
Wood	15%	15%	15%
<b>Total tons recovered</b>		<b>315</b>	<b>454</b>



# Measuring direct environmental impacts

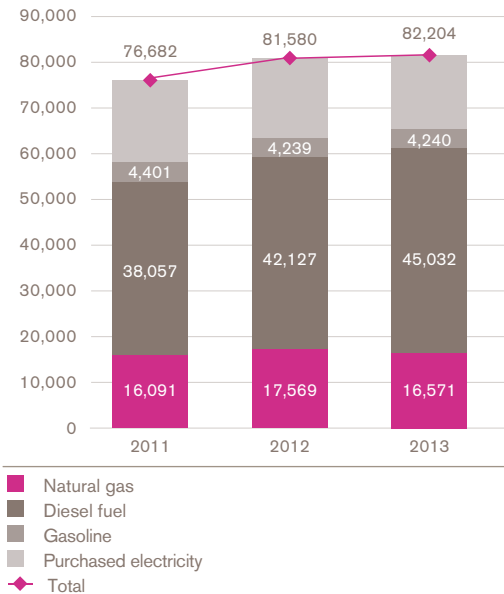
In Romania, we continue to drive efficiencies in our operations and reduce our energy consumption and resulting greenhouse gas emissions where possible.

The main opportunities for us to reduce energy consumption and emissions in our direct operations are through fuel consumption for distribution deliveries and road travel for our medical representatives and sales teams.

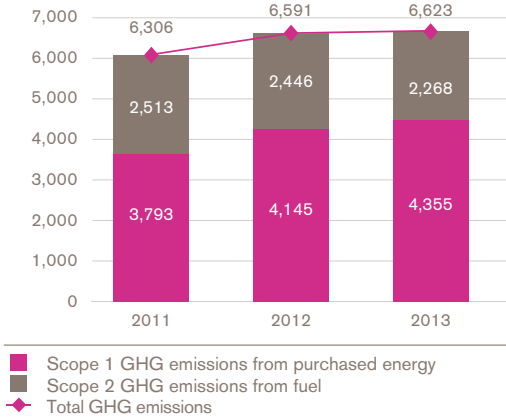
### Energy and emissions

In 2013, we kept our energy consumption and greenhouse gas emissions stable versus 2012. We continue to seek efficiencies across our operations. Restructuring of our logistics and distribution operations in 2013 is likely to generate environmental benefits in 2014.

Energy consumption in gigajoules by source (2011-2013)



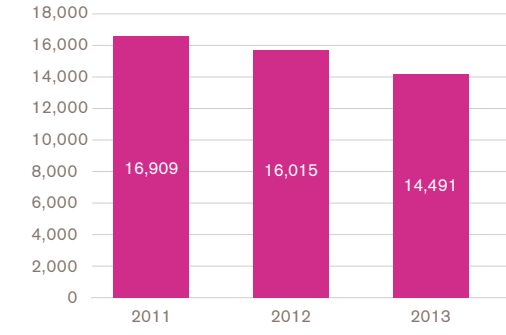
GHG emissions in tons CO2e (2011-2013)



### Water consumption

In 2012, we reduced our total water consumption by 5%, the result of consistent attention to water conservation across all our operations, including office-based facilities through improved controls of water-use for hygiene and sanitary facilities.

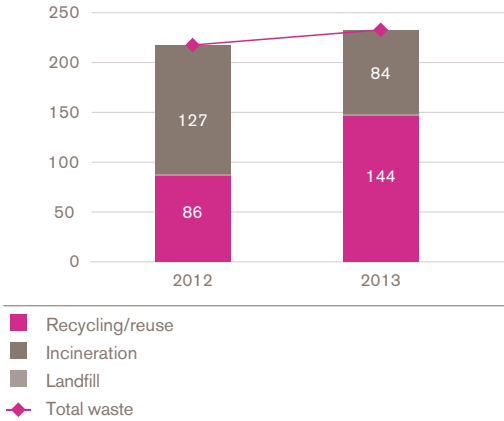
Total water consumption in m3 (2011-2013)



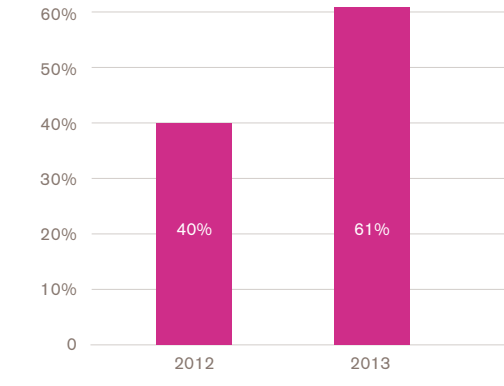
### Waste

Although our overall waste levels slightly increased in 2013, we made a concerted effort to recycle more, and achieved a 61%

Total hazardous and non-hazardous waste by disposal method in tons (2012-2013)



Recycle and reused waste as a percentage of total waste 2012-2013



recycling rate, significantly higher than the 40% we recycled in 2012. Less than 3% of our total waste is classified as hazardous.

### Delivery transportation efficiency

We aim for continuous improvement in our product delivery operations and train all our delivery drivers in fuel-efficient driving. In 2013, we increased our product transportation efficiency by 1.5% from 71 litres of diesel fuel for each ton of product distributed to our customers to 70 litres.

# Engaging employees in environmental initiatives

Educating our employees in environmental preservation and resource efficiency is a priority for GSK. In our "Act Green" initiative, we encourage employees to play their part in daily environmental actions around our offices and other facilities.

In 2012, we launched "Act Green" with the support of an environmental NGO to encourage and implement eco-responsible practices among our employees. Employees took part in

interactive courses to learn about recycling, waste avoidance, water conservation and energy reduction practices in our daily work. Posters were placed around our offices to remind employees to adopt eco-habits.

We placed segregated waste bins in several locations in our offices and employees place their paper, cardboard and metal waste in the relevant bins for recycling. We donate money earned from recycled

materials for reforestation in Romania, and this funded the planting of 412 trees over a two year period.

In our first two years of "Act Green", we segregated and sent more than 10 tons of waste materials for recycling.

**"Act Green" Romania: recycling results**  
April 2012 - April 2014

Paper and cardboard	10,025 kg
Plastics (PET)	66 kg
Aluminium	15 kg

